



# Riverview Showcase of Champions

|                       |                  |  |
|-----------------------|------------------|--|
| <b>Location:</b>      | School Name      | Riverview High School  |
|                       | School Address   | 11311 Boyette Road   |
|                       | City, State, Zip | Riverview, FL 33569  |
| <b>Date and Time:</b> | Contest Date     | Saturday, February 23, 2019                                      |
|                       | Show begins at   | 10:00 AM   |
| <b>Tickets:</b>       | Ticket Prices    | \$15 general admission<br>Children 6 and under free<br>Cash only |

## **TEAM CHECK-IN:**

### **GUIDES:**

A student guide will be available for each team. Please inform the check-in staff if you would like to be assigned a guide.

### **PARKING:**

Abundant parking is available around the school property. No additional charge for parking is collected. Refer to enclosed map for parking locations.

### **EQUIPMENT DROP-OFF:**

Any vehicles carrying equipment needed for warm-up (flags, rifles, sabers, etc.) can drop off at the team parking lot on the north end of campus before proceeding to equipment parking. Vehicles carrying floors and props should proceed directly to equipment parking on the south end of campus. Refer to enclosed map for parking locations.

### **SEATING IN THE GYM:**

Judges will be seated in specially designated areas. Seating will be on a "first come, first served, basis for spectators in the performing side bleachers. Participating teams will be asked to sit in the nonperforming side bleachers. There will be door monitors to check that all spectators have paid admission. Doors will be closed during performances and NO entry will be allowed during performances.

### **COLORGUARD WARM-UPS:**

Body warm-ups will take place in the band room. Equipment warm-ups will take place in the auditorium. There is ample room throughout the school's campus for teams to warm-up prior to their scheduled time. A volunteer will be on duty to assist in keeping to the colorguard rotation schedule, however we ask that you

do your best to follow your assigned times. Teams may choose to skip the scheduled warm-up, but are responsible for reporting to the holding area on time.

**PERCUSSION AND WINDS WARM-UPS:**

Percussion and winds warm-ups will take place in the parking lots on the northwest corner of the school. Refer to enclosed map for exact location.

**DRESSING FACILITIES:**

Locker rooms will be open for performers. Please vacate in a timely fashion to allow space for other teams. Riverview High School and the Florida Federation of Colorguards Circuit will not be responsible for lost, stolen or damaged property. Please be courteous to the teams using this facility later in the day and clean up after yourself.

**PROP STORAGE:**

Storage for props will be located under the covered walkways on the north side of the gymnasium. After your performance we ask that you load your props into your trailers/trucks. Ask a volunteer in the equipment parking lot for further assistance.

**INSPECTIONS:**

Equipment and props will be inspected in the holding area prior to the performance. Questions regarding your equipment's legality will be determined by the Contest Director and Chief Judge assigned by the Florida Federation of Colorguards Circuit.

**FOOT COVERING, EQUIPMENT AND ACCESSORIES:**

All rifles, flag poles and sabers must be padded and any props must have a protective covering. Shoes with hard soles must be taped. All carts or rolling equipment must have clean, working wheels. No metal wheels allowed. All equipment and props will be inspected prior to performance. Any questions about equipment's legality will be determined by the Contest Director and Chief Judge assigned by the FFCC. Please understand teams unable to take corrective action may not be allowed to perform if said performance may risk floor damage.

**FLOOR SIZE:**

Contest floor will be 60'x100'.

**EQUIPMENT REMOVAL:**

Teams must remove all equipment from the gym immediately following performance.

**TABULATING AND JUDGING AREA:**

Only authorized FFCC or assigned personnel will be allowed in the tabulation and judging areas. DO NOT APPROACH TABULATION ROOM OR JUDGES AREA AT ANY TIME! Judges commentary will be uploaded to the ffcc.org website as soon as it is processed.

**FLOOR CREW:**

If you are bringing your own floor covering, please make sure your floor is at holding on time. We will be providing small floor crews for every team performing; they are there to assist your floor crew. They have been trained on how to set up your floor based on the entry/exit procedure for our gym. Please make sure your floor is folded correctly for the show.

**SHOW MUSIC:**

Show music CD's should be turned in to the sound table at least 30 minutes prior to the team's performance time. If you are using an MP3 player the circuit can connect it to the sound system, but will not be responsible

for its operation. A team staff member must be present to operate the player. If not picked up after your performance, your show CD will be placed at the trophy table.

**SOUND CHECKS:** Sound checks are for speed only. Sound checks will happen from 9:00 to 9:55 a.m. and then at the discretion of the announcer.

**AWARDS CEREMONIES:** There will be two award ceremonies. Please send capstins to holding immediately following the last performance for your block of the show.

**CONCESSION STAND:**

The concession stand will be open on Saturday from 8:30 AM until end of show. Full concessions will be sold outside the gym lobby with a limited drink/snack menu inside the gym lobby.

**HOSPITALITY:**

There will be a hospitality room for directors and staff. Refer to enclosed map for exact location.

**PHOTOGRAPHY:**

Photography is allowed however, for the safety of our performers. **NO FLASH PHOTOGRAPHY!!!**

**CRITIQUE:** Please log into FFCC.org in order to see the schedule.

**Emergency Contact Numbers:**

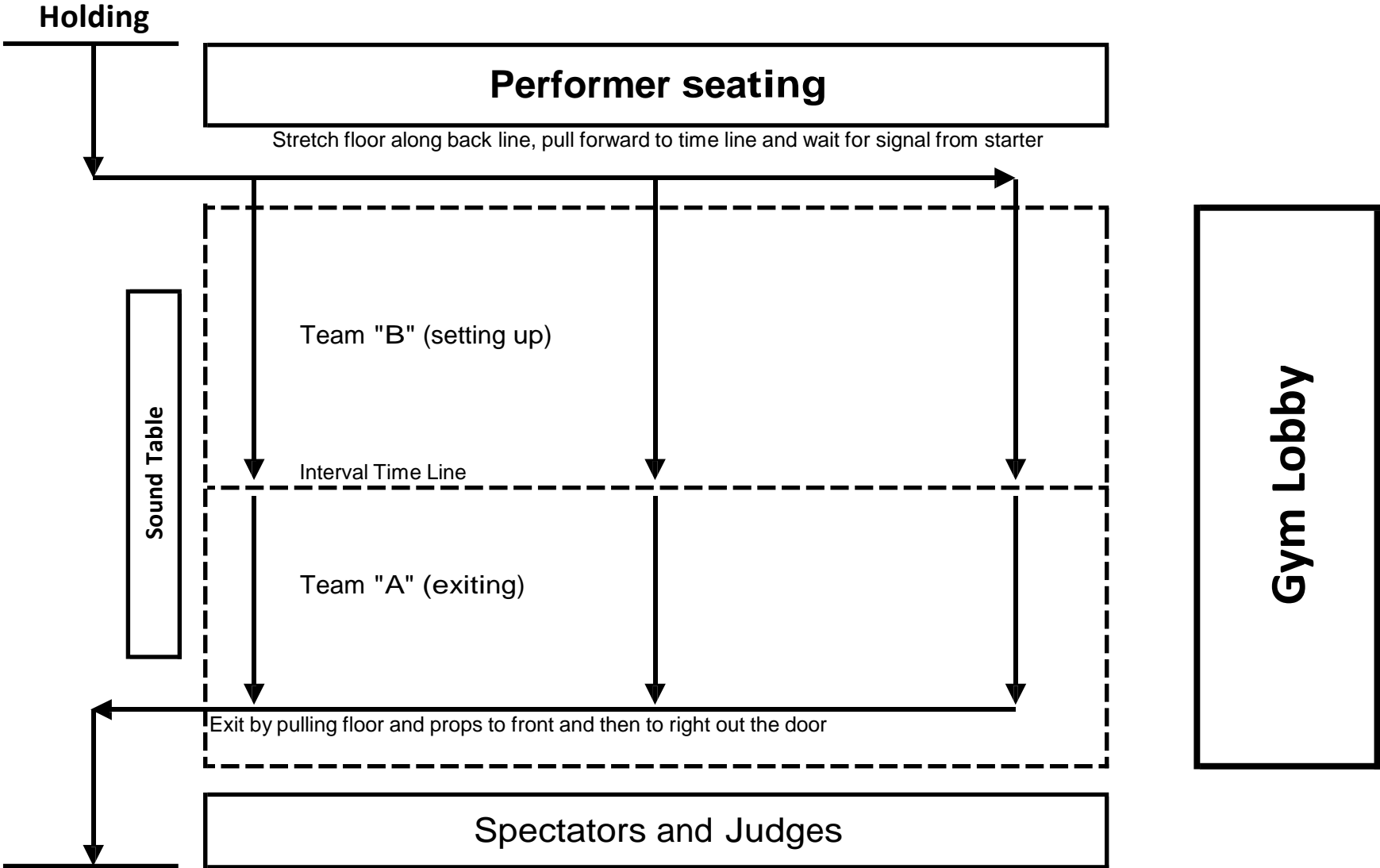
**Travis Miller, Riverview HS Asst. Band Director – 813-892-2130**

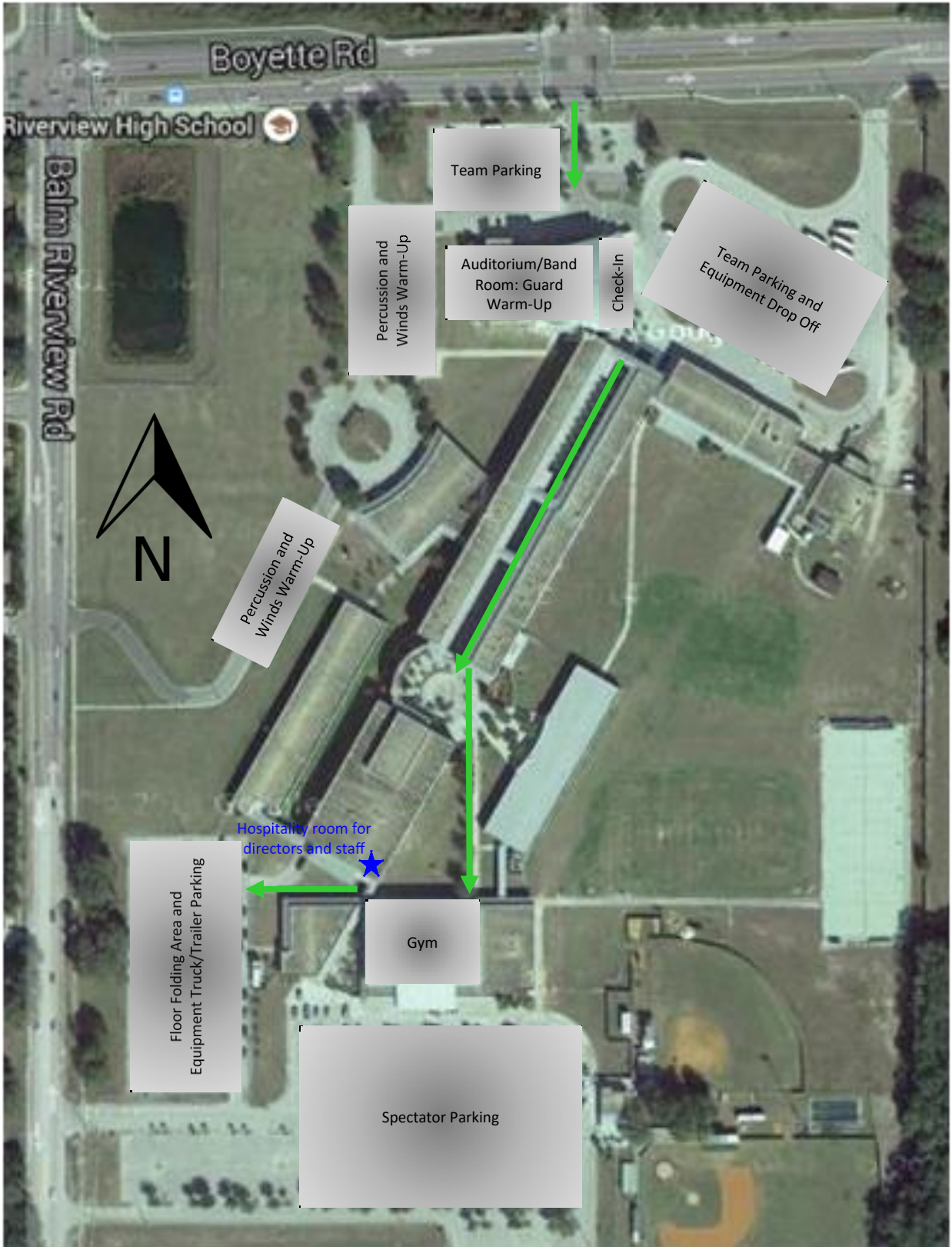
**Mike Palau – FFCC Contest Director (Day of show contact) 386-365-0675**

**Trevor Cox – FFCC Contest Administrator (Scheduling only) – trevor@ffcc.org**

***Riverview High School is a SMOKE FREE CAMPUS and a NO SMOKING policy will be strictly enforced.***

# Entry / Exit procedure for Riverview







Judges View (above) / Spectator View (below)





Performer View



Body Warm-up (above) / Equipment Warm-up (below)

